



Service Carts & Equipment

SERVICE CARTS & STATIONS | MOBILE HANDWASHING STATIONS
BEVERAGE RESTOCKING CARTS | TRAY STANDS



SERVICE CARTS & STATIONS

Service carts must be functional, durable, and attractive. Forbes' collection of food and beverage service carts offer all of these characteristics and more with over 100 different design and utility options. Our extensive variety of carts are available in solid wood, wood veneer, high pressure laminate and steel. Custom designs are also available.



SERVICE CARTS & STATIONS

Model 5515

Trend stone/glass shelves

Square brushed stainless steel support posts

4-Sided stainless steel gallery rails on top and bottom shelves

Stainless steel handle

Four corner bumpers

Four swivel casters (two with brakes)

	Length	Width	Height
in:	42	23	32
cm:	107	59	82





- NEW ITEM



- BEST SELLER



- REDUCED PRICE



- QUICK SHIP



- GOOD/BETTER/BEST



Model 4542

Laminate shelves

Drop leaf (48"L with leaf up)

Brushed stainless steel support posts

	Length	Width	Height
in:	39	18	31
cm:	99	46	79



Model 4541

Laminate shelves

Drop leaf (48"L with leaf up)

Polished brass support posts

	Length	Width	Height
in:	39	18	31
cm:	99	46	79



Model 4030

Three shelves finished in Mahogany Thermofoil

Stainless steel support posts

	Length	Width	Height
in:	36	18	30.75
cm:	92	46	79



Model 5539

Avonite inlaid top and drop-leaf (46"L with leaf up)

Veneer finish

Solid wood molding

	Length	Width	Height
in:	37.5	18	32.5
cm:	96	46	83

- *Model 5538 - Inset Avonite only (no drop-leaf)
- *Model 5534 - Wood top only
- *Model 5535 - Wood top and drop leaf



Model 5530

Veneer finish

Solid wood molding

Painted, Brass or Chrome posts available

	Length	Width	Height
in:	36	18	32.5
cm:	92	46	83



Model 5524

Veneer finish

Two drop-leaves (49"L with leaves up)

Solid wood retaining lip on all shelves

1.25" wood posts with brass ends

	Length	Width	Height
in:	35	17	31.5
cm:	89	44	81



Model 4645

Vinyl T-molding

Laminate finish

Solid wood posts

Wheel brakes

	Length	Width	Height
in:	44	19	31
cm:	112	49	79





- NEW ITEM



- BEST SELLER



- REDUCED PRICE



- QUICK SHIP



- GOOD/BETTER/BEST

SERVICE CARTS & STATIONS



Model 5529

Veneer finish

Two drop-leaves (52"L with leaves up)

Solid wood posts

	Length	Width	Height
in:	38	16	30.5
cm:	97	41	78

*Model 5528 - With one drop-leaf

*Model 5527 - Without drop-leaves



Model 5520

Avonite top

Veneer finish

One drawer and pull-out shelf

Solid wood molding

Decorative solid wood posts

	Length	Width	Height
in:	43.5	21	32
cm:	111	54	82



Model 5526

Avonite top

Veneer finish

Decorative solid wood posts

	Length	Width	Height
in:	40	20	33.5
cm:	102	51	86



Model 5557

Avonite top

Solid wood raised beveled panels

Two fixed shelves

	Length	Width	Height
in:	34	19	33.5
cm:	87	49	86

*Shown with 6004 handle (not included on base model)

*Model 5562 - Avonite top and drop-leaf



Model 5590

Avonite top

Solid wood raised beveled panels

One drawer and one pull-out shelf

Stainless steel accents

	Length	Width	Height
in:	38	19	35.5
cm:	97	49	91

*Shown with 6007-PS handle (not included on base model)



Model 4740

Laminate finish

Two fixed shelves

Vinyl T-molding

	Length	Width	Height
in:	30	18	34
cm:	77	46	87



Model 4757

Laminate finish

Brass accents

Vinyl T-molding

	Length	Width	Height
in:	38	23	41
cm:	97	58	104





- NEW ITEM



- BEST SELLER



- REDUCED PRICE



- QUICK SHIP



- GOOD/BETTER/BEST

SERVICE CARTS & STATIONS



Model 5566

Avonite top

Veneer finish

Two drawers

Solid wood molding

	Length	Width	Height
in:	38	21	31.5
cm:	97	54	81



Model 5579

Avonite top and drop-leaf (47"L with leaf up)

Veneer finish

Center drawer

	Length	Width	Height
in:	40	21	32
cm:	102	54	82

*Model 5578 - Without drop-leaf



Model 5565

Avonite top and drop-leaf (50"L with leaf up)

Veneer finish

	Length	Width	Height
in:	41.5	22	32
cm:	106	56	82

*Shown with 6005 handle (not included on base model)



Model 5759

Avonite top

Veneer finish

Two sliding doors

Solid wood moldings

	Length	Width	Height
in:	49.5	27	40
cm:	126	69	102



Model 5833

Avonite top and tier

Veneer finish

One drawer

Decorative solid wood posts and roped posts

Gallery rails

	Length	Width	Height
in:	40	20	47
cm:	102	51	120



Model 4832

Avonite top with T-molding

Stainless steel gallery rails and handles

Two removable stainless steel bain maries

Two Avonite glass racks

	Length	Width	Height
in:	36	19	40
cm:	92	49	102



Model 4790

Laminate finish

Two drop-leaves (72"L with leaves up)

Two adjustable shelves

	Length	Width	Height
in:	49	23.5	38
cm:	125	60	97



Model 5635

Avonite top

Veneer finish

Drop-leaf (46.5"L with leaf up)

Removable butane stove

	Length	Width	Height
in:	36.5	18.75	35.75
cm:	93	48	91





- NEW ITEM



- BEST SELLER



- REDUCED PRICE



- QUICK SHIP



- GOOD/BETTER/BEST

SERVICE CARTS & STATIONS

Model 5980			
Veneer finish			
Top hutch with shelf			
Solid wood molding			
	Length	Width	Height
in:	30	22	62
cm:	77	56	158



Model 5987			
Avonite top			
Laminate finish (Shown in custom finish)			
Swing doors			
Four drawers			
Floor levelers			
	Length	Width	Height
in:	79	18	34
cm:	201	46	87



Model 5986			
Avonite top			
Veneer finish			
Three drawers			
Two adjustable shelves			
	Length	Width	Height
in:	73	24	37
cm:	186	61	94



MOBILE HAND WASHING STATION

Self-contained portable hand washing stations are the perfect solution for any mobile kitchen or bar. Consisting of fresh and gray water tanks; stainless steel top, basin, strainer, and 6 inch gooseneck faucet; and on-demand hot water operating system. These hand wash stations include everything you need to keep your operation on the move.



Maple



Cherry



Mahogany



Black



White

Model 5746-D

Mobile hand washing station

Laminate finish

Stainless steel top

Single 10" deep sink

Two locking swing doors

Liquid soap dispenser

ADA compliant long faucet handles

NSF Standard 169 certified

Available in Maple, Cherry, Mahogany, White or Black laminate

	Length	Width	Height
in:	25	25	43
cm:	64	64	110

*Model 5746 - Single 6" deep sink

*Model 5746-2 - Double sink

*Model 5746-3 - Triple sink



MOBILE HAND WASHING STATION



- NEW ITEM



- BEST SELLER



- REDUCED PRICE



- QUICK SHIP



- GOOD/BETTER/BEST

Handles



Model 6002

Painted stub handle



Model 6004

Reeded brass handle



Model 6005

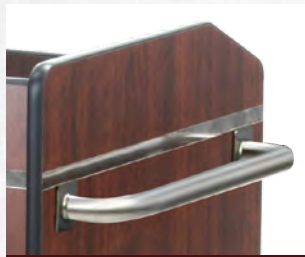
Polished brass handle



Model 6007

Roped brass handle

Not all handles are available on all cart models. Call for more information.



Model 6002-SS

Stainless steel stub handle



Model 6004-PS

Reeded chrome plated handle



Model 6005-PS

Polished stainless steel handle



Model 6007-PS

Roped chrome plated handle

Gallery Rails



Model 6035

Stainless steel single four-sided



Model 6034

Stainless steel single three-sided



Model 6022

Stainless steel single two-sided

Miscellaneous



Model 6223

Laminate pull-out shelf

Model 6228 - Wood veneer version



Model 6241

Laminate drawer

Model 6249 - Wood veneer version



Model 6245

Laminate drawer with dividers

Model 6247 - Wood veneer version



Model 6240

Veneer drop leaf

Model 6239 - Laminate version

Avonite



GRAY GRANITE



TRAVERTINE



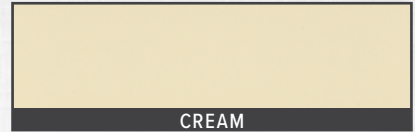
ADOBE



STAR SHINE

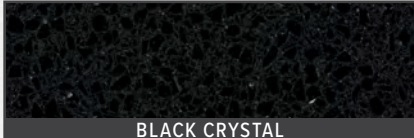


BLACK GRANITE



CREAM

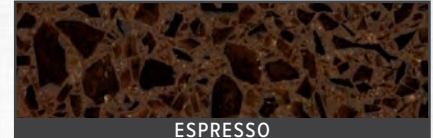
Trend Stone/Glass



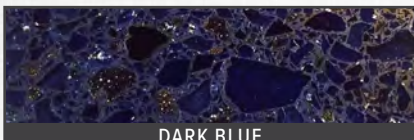
BLACK CRYSTAL



WHITE COPPER



ESPRESSO



DARK BLUE



ST. LEO'S COPPER



CHIARO AMBRA



WHITE CRYSTAL



DOVE TAIL



WHITE FROST



BROWN PEARL



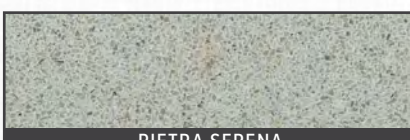
ROYAL IVORY



CREMA LUNA



PERLA BIANCA

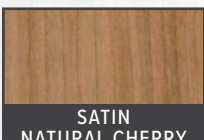


PIETRA SERENA

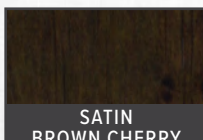


PERLA DI SABBIA

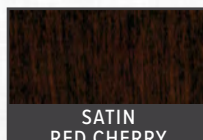
Wood



SATIN
NATURAL CHERRY



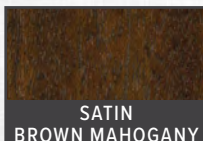
SATIN
BROWN CHERRY



SATIN
RED CHERRY



SATIN
GOLDEN MAHOGANY



SATIN
BROWN MAHOGANY



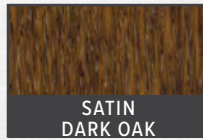
SATIN
RED MAHOGANY



SATIN
LIGHT OAK



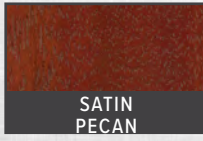
SATIN
MEDIUM OAK



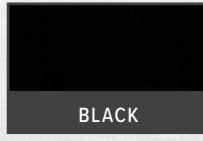
SATIN
DARK OAK



SATIN
MAPLE



SATIN
PECAN



BLACK

Laminate



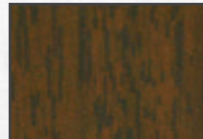
MEDIUM
OAK



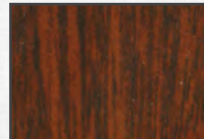
LIGHT
OAK



SMOKY
WALNUT



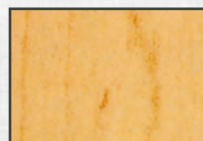
WALNUT



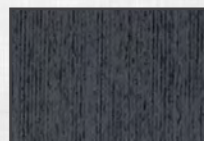
MAHOGANY



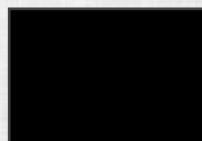
CHERRY



MAPLE



SUEDE



TEXTURED
BLACK

BEVERAGE RESTOCKING CARTS

Forbes catalog of beverage restocking carts offers a variety of attractive and functional styles sure to compliment any decor. Most beverage restocking carts include drawer dividers in two different sizes and drawer mats. Custom orders are available upon request.



Model 4403

Laminate finish on steel cabinet

Side cabinet with four shelves

All locking doors

Four adjustable drawers

Full wrap-around bumper

	Length	Width	Height
in:	47	23	46
cm:	120	59	117



Model 4410

Brushed stainless steel top

Powder epoxy painted finish

Locking doors

Three shelves

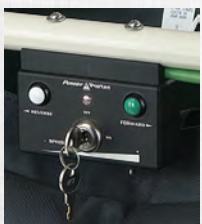
Full wrap-around bumper

	Length	Width	Height
in:	39	22	47
cm:	100	56	120





Model 4402			
<i>Stainless steel top tray</i>			
<i>Powder epoxy painted finish</i>			
<i>Four adjustable drawers</i>			
<i>Side cabinet with four shelves</i>			
<i>Full wrap-around bumper</i>			
	Length	Width	Height
in:	47.5	21	46.5
cm:	120	53	118



Model 4419

Power Mobility Unit

*Model 4419 Power Mobility Unit shown on Model 4402 Beverage Restock Cart

A factory fitted electric motor with rechargeable battery can operate in forward and reverse at variable speeds. For carts with 8" wheels only.



TRAY STANDS

Forbes Tray Stands are unmatched in quality and durability. Choose from an array of colors and finishes to match your decor. Custom orders available upon request.



Model 6850			
<i>Painted steel frame</i>			
<i>Powder epoxy finish - see next page</i>			
	Depth	Width	Height
in:	15	19.5	35.5
cm:	39	50	91



Model 6861			
<i>Solid oak frame</i>			
<i>Extra tall</i>			
<i>Available finishes on next page</i>			
	Depth	Width	Height
in:	16	18	36
cm:	41	46	92



Model 6860			
<i>Solid oak frame</i>			
<i>Standard height</i>			
<i>Available finishes on next page</i>			
	Depth	Width	Height
in:	16	18	31.5
cm:	41	46	81



Finishes



BEIGE



BLACK



SILVER



STAINLESS STEEL

Steel Tray Stand Construction

- Heavy gauge steel tube
- Steel rivets and nylon spacers are used at pivot points
- Metal clips are glued and crimped on strap ends
- Available in four finishes



This design reduces fraying of strap ends, secures straps to rack more effectively and hides the hardware.



METAL CLIP

STRAP END

Finishes



LIGHT OAK



MEDIUM OAK



DARK OAK



MAHOGANY



WALNUT



BLACK

Oak Tray Stand Construction

- All oak stands are equipped with two horizontal cross braces near the bottom of the legs.
- Brass plated steel rivets and nylon spacers are used at the pivot points
- Strap ends are folded over and pneumatically attached with 1/2" long heavy-duty construction staples
- All Forbes oak tray stands go through a six step high quality, furniture-grade finishing process

