

ASSEMBLY INSTRUCTIONS

EcoFlex Tables Transport Cart

Model #7050 & #7051

REQUIRED TOOLS: Screwdriver, 7/16" combination wrench, 9/16" combination wrench, Ratchet, 7/16" socket, 1/2" socket, 9/16" socket, 3/4" socket

- 1** Attach four swivel casters to corners.



x 16

5/16" -18 x 3/4"
Hex Bolt GRB Z/G



x 16

7/16" M.S.C.W. PLTD
Lock Washer



ASSEMBLY INSTRUCTIONS

EcoFlex Tables Transport Cart

Model #7050 & #7051

2

Flip base over. Attach metal retaining lip to base.



X 6

1/4"x 1 3/4" Phil Flathead Zinc



X 6

1/4" Nylon Insert Zinc



3 Attach left and right frame supports to base.

*NOTE: These parts are not interchangeable. The correct part MUST be attached to the corresponding side.



LEFT SUPPORT

RIGHT SUPPORT



*NOTE: Finger tighten bolts to allow room for movement when fitting frame into supports. DO NOT tighten bolts completely at this step.

4 Flip base onto side. Attach center frame support to base.



X 4

3/8" - 16 x 2" Hex Bolt Stainless Steel



X 4

1/2" Flat Washer



X 4

3/8" Nylon Insert L/N Z



CENTER SUPPORT



5 Flip onto wheels. Fit frame into frame supports. Attach frame to frame supports.



X 6

3/8" - 16 x 2" Hex Bolt Stainless Steel



X 6

1/2" Flat Washer



X 6

3/8" Nylon Insert L/N Z



ASSEMBLY INSTRUCTIONS

EcoFlex Tables Transport Cart Model #7050 & #7051

6 Flip onto side. Attach frame to base from bottom.



X 3
1/2\" -2 x 3/4\"
Hex Bolt GRB Z/G



X 2
5/8\" Lock Washer Zinc



X 3
5/8\" Flat Washer Zinc



*NOTE: The left and right bolts require a lock washer AND a flat washer. The center bolt requires ONLY one flat washer.



ASSEMBLY INSTRUCTIONS

EcoFlex Tables Transport Cart

Model #7050 & #7051

7

Attach rigid caster to center of base.



X 4

5/16" -18 x 3/4"
Hex Bolt GRB Z/G



X 4

7/16" M.S.C.W. PLTD
Lock Washer

*NOTE: After attaching rigid center caster, tighten down all bolts for frame supports.



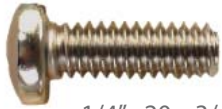
ASSEMBLY INSTRUCTIONS

EcoFlex Tables Transport Cart

Model #7050 & #7051

8

Flip onto wheels. Attach strap brackets.



X 2

1/4" - 20 x 3/4" Phil Pan M/S Zinc



X 2

1/4" Ex Tooth L/X Zinc



X 2

1/4" Flat Washer



ASSEMBLY INSTRUCTIONS

EcoFlex Tables Transport Cart

Model #7050 & #7051

9

Attach handles to frame.



X 4

3/8" - 16 x 2" Hex Bolt Zinc



X 8

1/2" Flat Washer

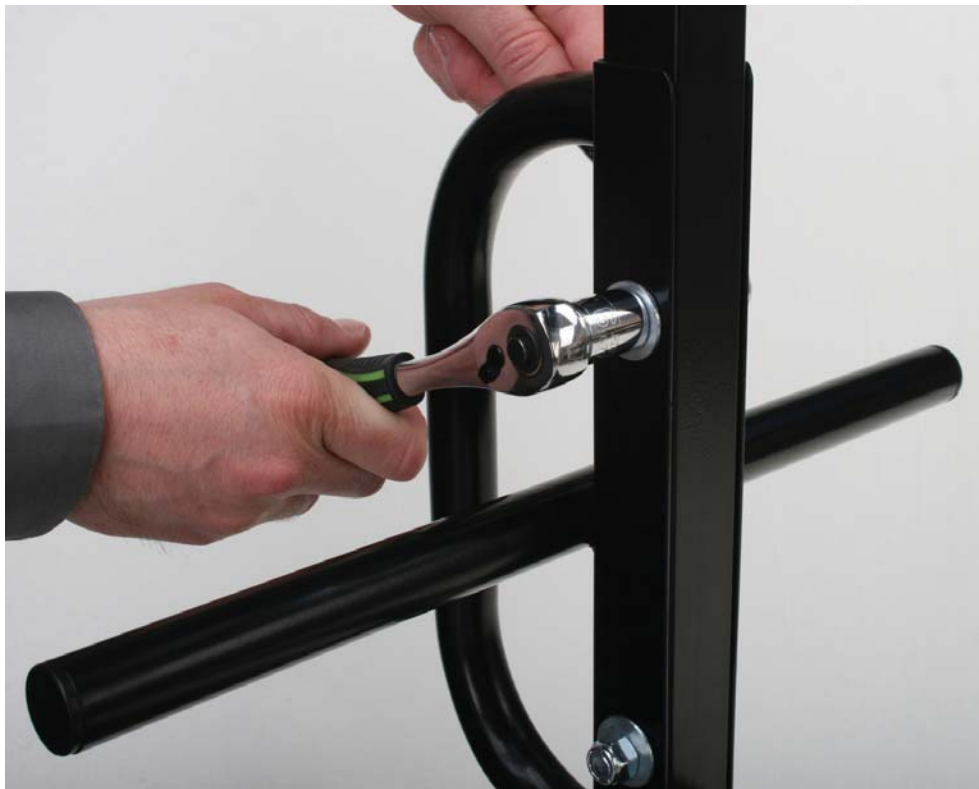


X 4

3/8" Nylon Insert L/N Z



*NOTE: All bolts require a flat washer on both sides of the handle.



10

Attach arms to frame.



X 4

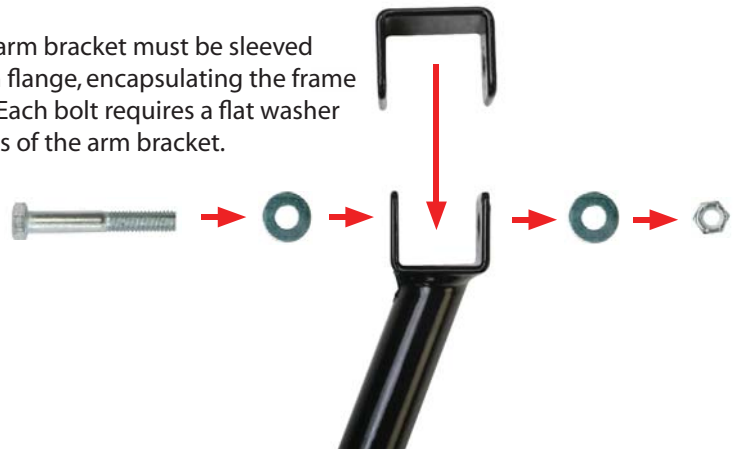
3/8" - 16 x 2.5" Hex Bolt Zinc



X 8

1/2" Flat Washer

*NOTE: The arm bracket must be sleeved over the arm flange, encapsulating the frame cross beam. Each bolt requires a flat washer on both sides of the arm bracket.



X 4

3/8" Nylon Insert L/N Z



ASSEMBLY INSTRUCTIONS

EcoFlex Tables Transport Cart

Model #7050 & #7051

