



MOBILE BAR & BACK BAR

Model 5887-X6 (Back Bar)

Wood veneer/brushed stainless steel finish

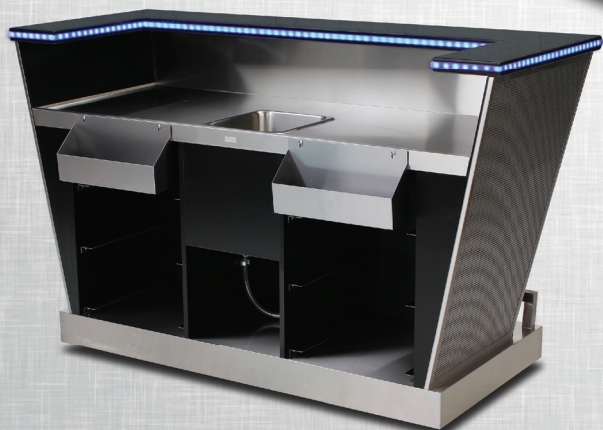
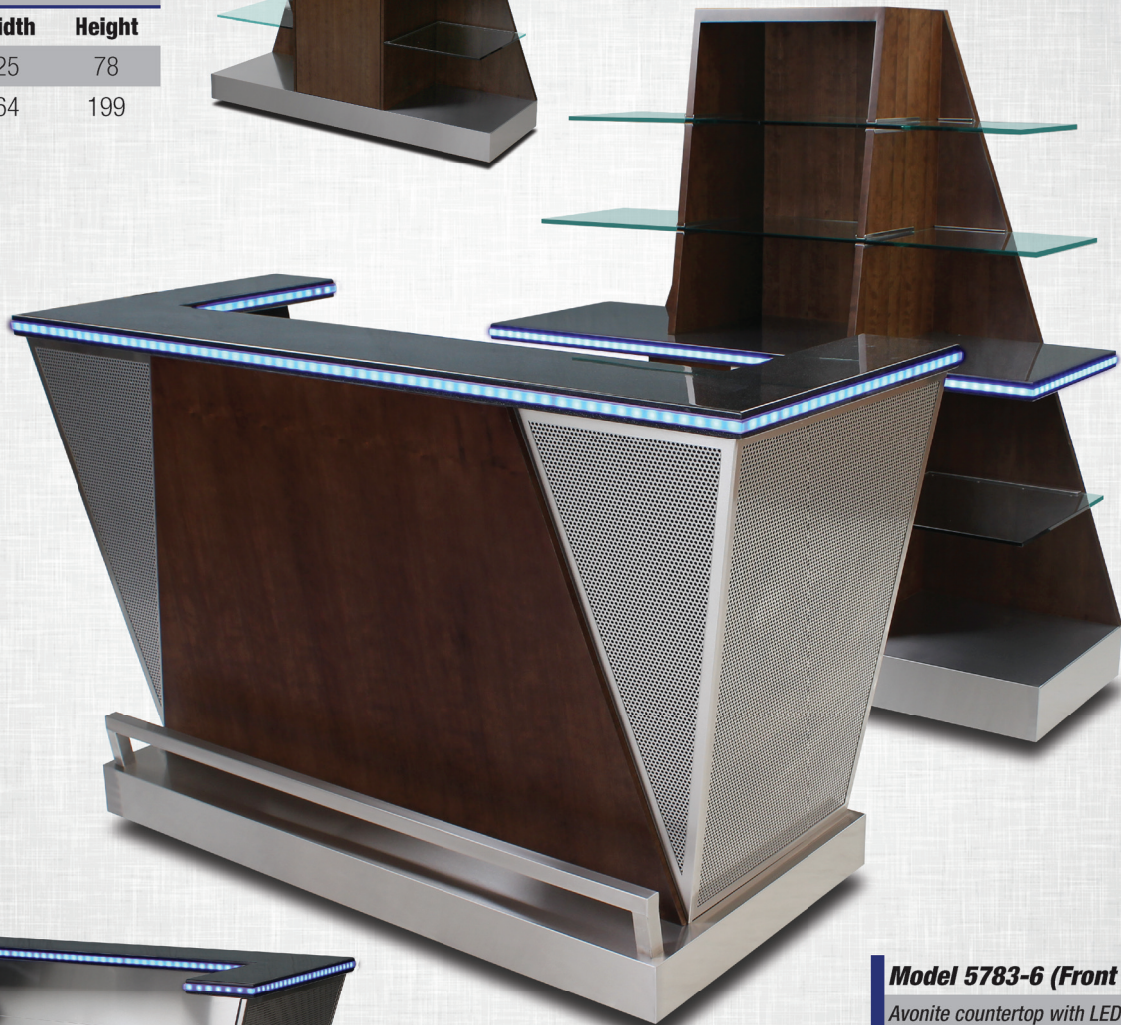
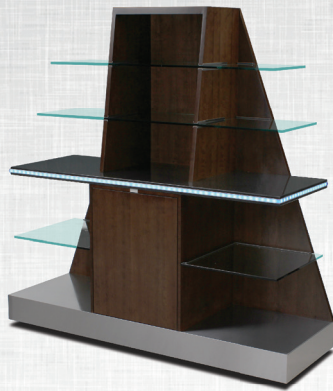
Avonite countertop with LED inlay

Tempered glass shelves

Enclosed storage area

Five Casters for mobility

	Length	Width	Height
in:	76	25	78
cm:	193	64	199



Model 5783-6 (Front Bar)

Avonite countertop with LED inlay

Wood veneer/brushed stainless steel/
perforated panel finish

Stainless steel working countertop

Stainless steel sink with drain

Two stainless steel speed rails

Five casters for mobility

	Length	Width	Height
in:	72	30	47
cm:	183	77	120