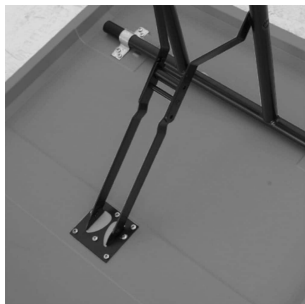


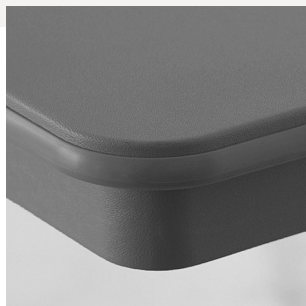


RESILIENT LIGHTWEIGHT ABS FOLDING TRAINING TABLE - 18" X 96"

SKU: ABS1896GR-SWBL

- Impact-resistant, corrugated honeycomb core
- Grey, molded, ABS top with matching edge
- Arched, steel legs with black powder coating
- Spring-loaded, leg brace locking mechanism with non-slip leg glides
- 16-gauge, 1 inch diameter steel legs
- Lightweight, sturdy and easy to set-up / tear-down
- BIFMA compliant





ADDITIONAL INFORMATION

Weight	46 lbs
Dimensions	Length: 96", Width: 18", Height: 29"
Features	Folding Legs , Arched Steel Legs , BIFMA Compliant , Impact-Resistant
Material	Lightweight Plastic
Table Shape	Rectangle