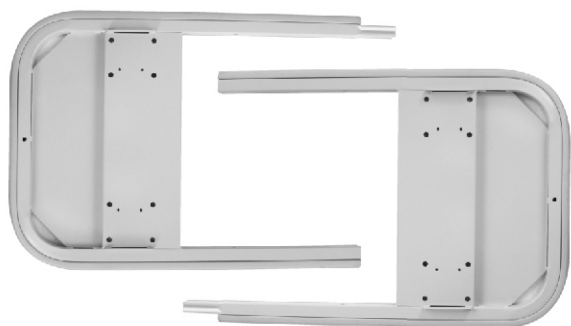


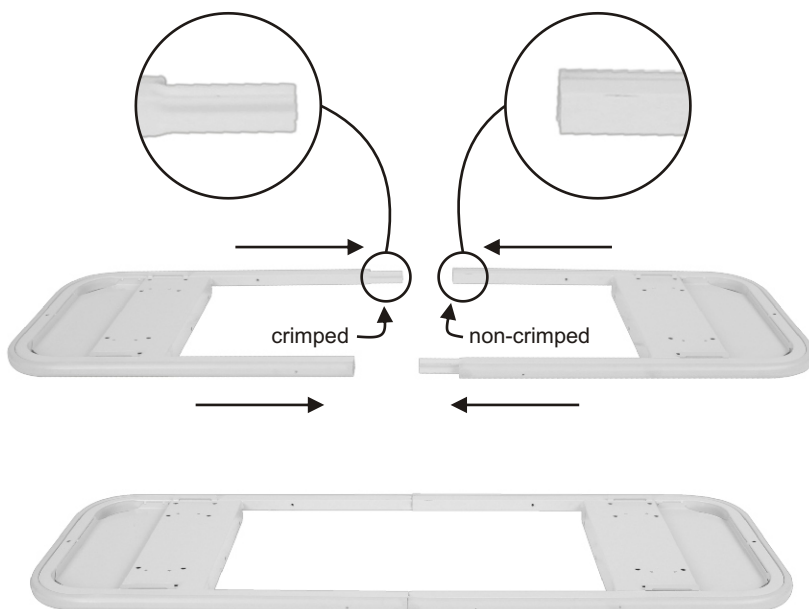
REQUIRED TOOLS: Medium Philips Head Screw Driver, 7/16 Wrench, Rubber Hammer

1 **Combining Base Ends**

HARDWARE IDENTIFICATION
 (actual size):



Place crimped end into non-crimped end



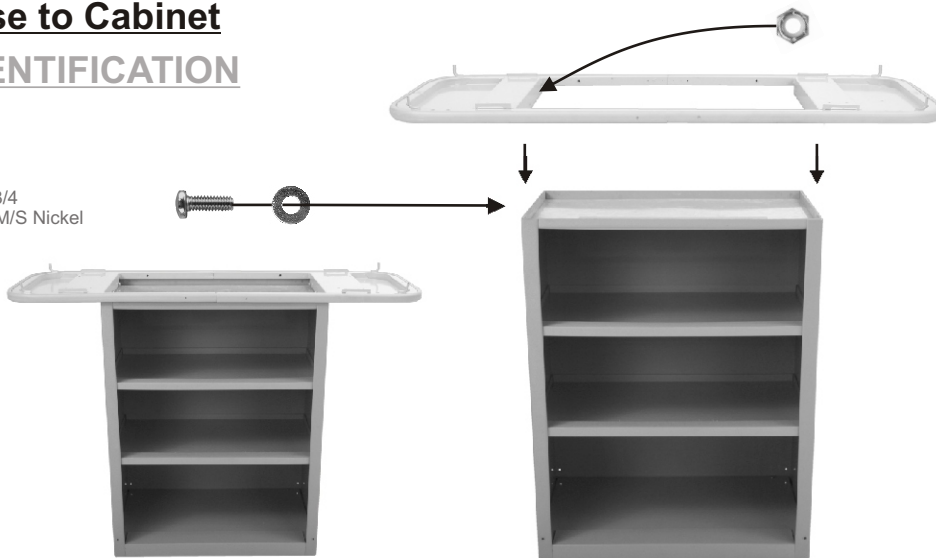
2 **Attaching Base to Cabinet**

HARDWARE IDENTIFICATION
 (actual size):

6=  1/4-20 x 3/4
 Phil Pan M/S Nickel

6=  5/8
 USS Flat Washer
 PLTD

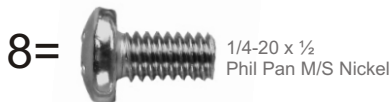
6=  5/16-18
 Nylon Insert
 L/N Z



3

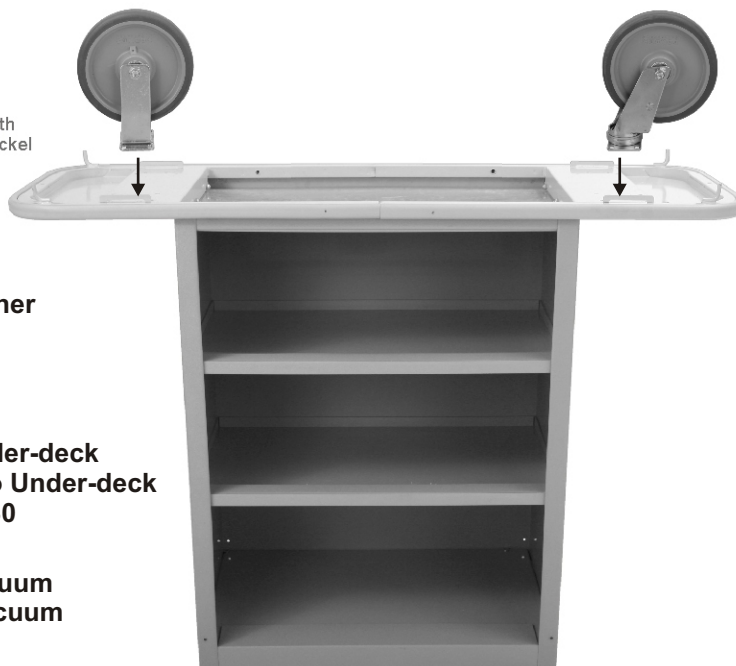
Attaching Wheels to Base

HARDWARE IDENTIFICATION (actual size):



Rigid Caster

Swivel Caster



Caster
Placement



****For connectability of corner
bumpers, please refer to
Revolving Corner Bumper
assembly #2337**

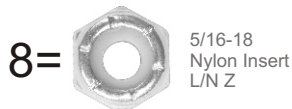
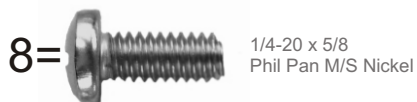
****For connectability of Under-deck
Glass Rack, please refer to Under-deck
Glass Rack assembly #2330**

****For connectability of vacuum
bracket, please refer to Vacuum
Bracket assembly #2329**

4

Attaching Handles to Cabinet

HARDWARE IDENTIFICATION (actual size):



Lift Black plastic clips
to remove pull drawer

