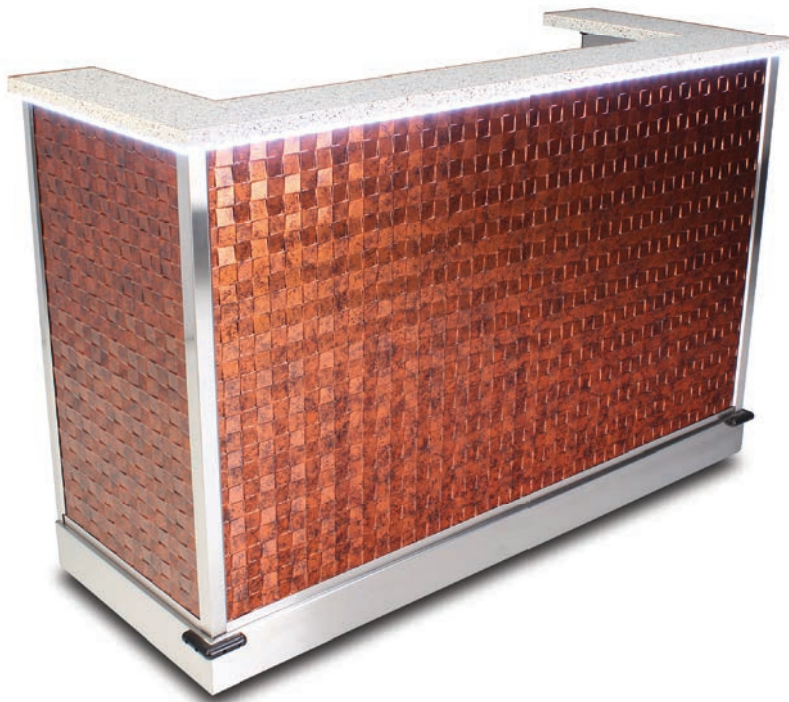


MYSTIQUEBAR

INTERCHANGEABLE PANELS ALLOW ENDLESS POSSIBLE COMBINATIONS

The new Mystique Mobile Bar from Forbes Industries features removable, replaceable, and interchangeable front and side panels that allow you to completely customize the look to suit your specific needs! The innovative panel-swapping and storage system makes it easy to switch your bar's look and feel in mere minutes, eliminating the need for multiple different bars. The Mystique Bar is the last best mobile bar you'll ever need to buy!



CHOOSE YOUR LENGTH

4, 5, and 6-foot bars are available

CHOOSE YOUR PANEL TYPE

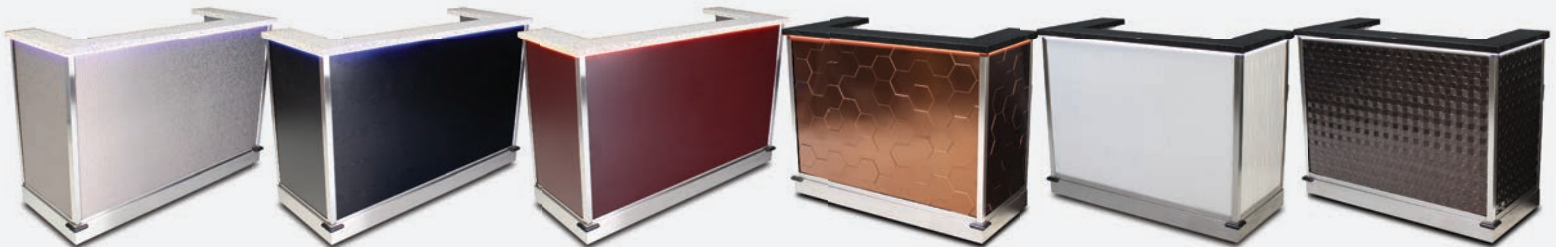
Double-sided high pressure laminate or 3D textured high impact thermoplastic

CHOOSE YOUR COUNTERTOP STYLE

Standard Avonite or eco-friendly Trend material. Over 20 colors to choose from!

CHOOSE LED LIGHTED COUNTERTOPS

Battery-powered remote controlled LED lighting is also available as an accessory



www.forbesindustries.com/mystique-bar

1933 East Locust Street Ontario, California 91761

P: 800.832.5427 F: 909.923.1969 E: sales@forbesindustries.com

MYSTIQUEBAR

THREE LENGTHS TO CHOOSE FROM



4-foot



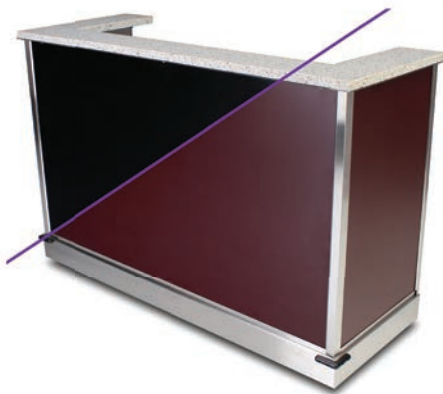
5-foot



6-foot

TWO PANEL TYPES TO CHOOSE FROM

Store up to three sets in one bar!



DOUBLE-SIDED REVERSIBLE LAMINATE PANELS

Choose two colors per panel from our selection of over 30 laminates!



3D TEXTURED HIGH IMPACT THERMOPLASTIC PANELS

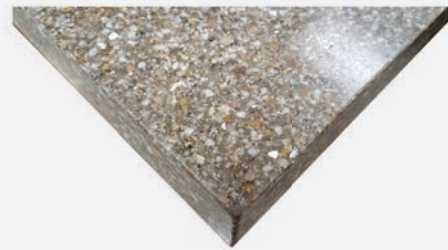
Choose from 10 super durable 3D textured plastic panel options!

TWO COUNTERTOP MATERIALS TO CHOOSE FROM



STANDARD AVONITE COUNTERTOPS

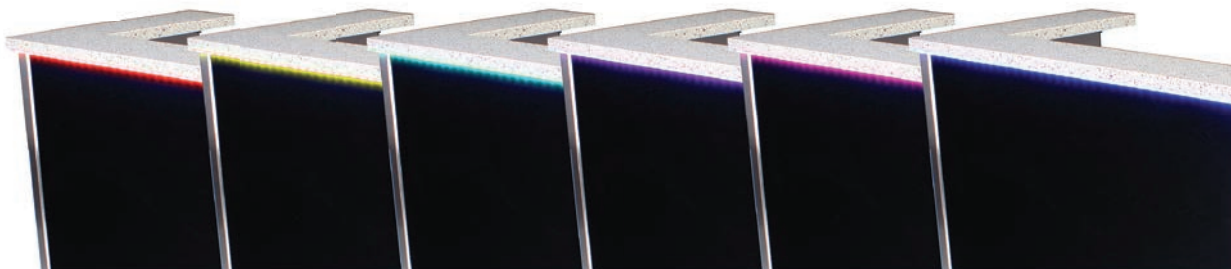
Choose from our 9 standard Avonite colors



UPGRADED TRND COUNTERTOPS

Eco-friendly Trend material is offered in 15 colors

ADD REMOTE-CONTROLLED LED LIGHTING



www.forbesindustries.com/mystique-bar

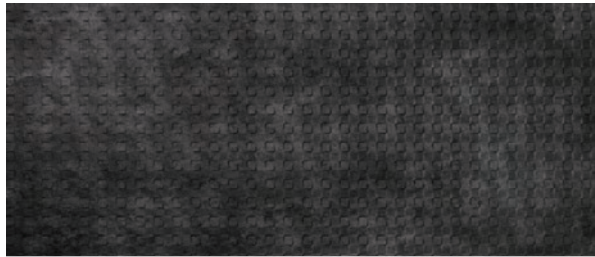
1933 East Locust Street Ontario, California 91761

P: 800.832.5427 F: 909.923.1969 E: sales@forbesindustries.com



MYSTIQUEBAR

3D TEXTURED HIGH IMPACT THERMOPLASTIC PANEL OPTIONS (Pick One)
(Panel sets are not included and must be ordered separately)



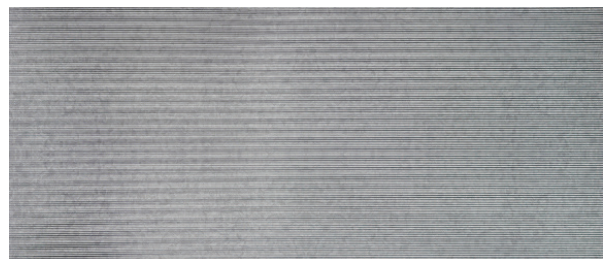
EM GUNMETAL - (2EG)



EM MOONSTONE COPPER - (2EM)



SC ANTIQUE BRONZE - (2ST)



SC GALVANIZED - (2SV)



MD AGED BRONZE - (2MB)



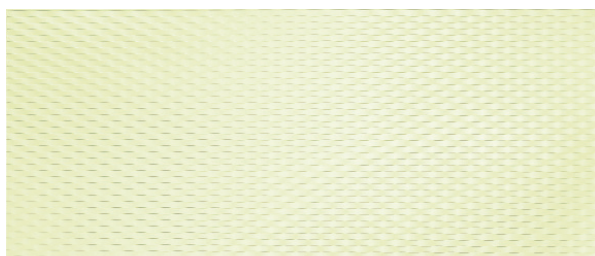
MD PURE WHITE - (2MW)



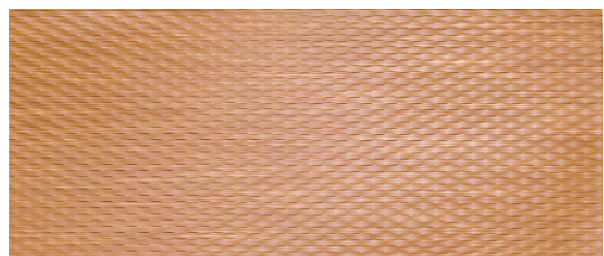
HC BRUSHED NICKEL - (2HN)



HC RUBBED BRONZE - (2HR)



GV ALMOND - (2GA)



GV NEW PENNY - (2GP)

www.forbesindustries.com/mystique-bar

1933 East Locust Street Ontario, California 91761

P: 800.832.5427 F: 909.923.1969 E: sales@forbesindustries.com

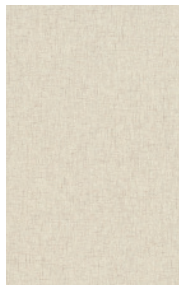
MYSTIQUEBAR

DOUBLE-SIDED REVERSIBLE LAMINATE PANELS (Pick Two)

(Panel sets are not included and must be ordered separately)



ICE FISHIN
(CF)



CAVALCADE SOUTH
(NT)



CRISSCROSS
(CC)



WEDDING CAKE
(WK)



LOOKS LIKATRE
(PL)



NEGOTIATING IN
GENEVA
(GD)



COOKIES N CREAM
(CK)



MACADAMIA NUT
(MN)



CHOCOLATE MALT
(HM)



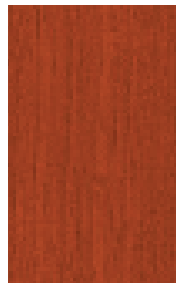
MAPLE
(MP)



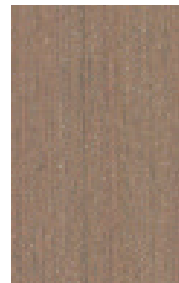
LIGHT OAK
(LO)



MEDIUM OAK
(MO)



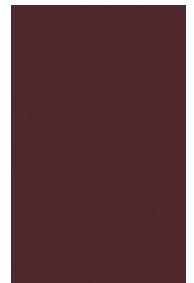
CHERRY
(CY)



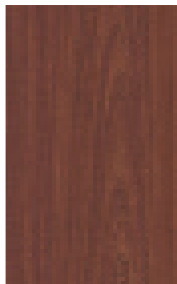
SMOKY WALNUT
(SY)



SEEMS LIKATRE
(KN)



ROYAL BURGUNDY
(RB)



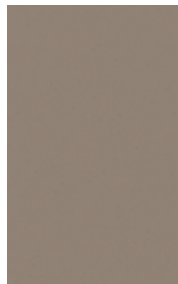
MAHOGANY
(MH)



WALNUT
(WA)



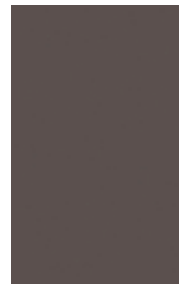
THUNDERSTORM
(TS)



GREIGE
(GE)



INGOT GRAY
(NG)



SLATE
(SL)



LUNAR LEGNO
(LL)



FIRST N MAIN
(FM)



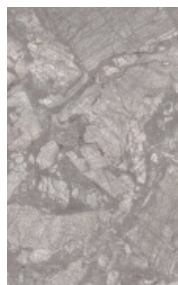
BLACK
(EN)



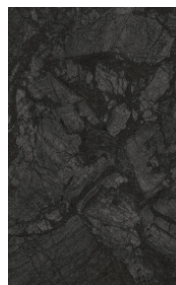
SUEDE
(SU)



POLAR CAP
(SLATE TEXTURE)
(LPC)



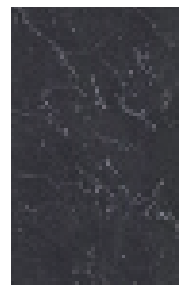
HEDGEROW
(SLATE TEXTURE)
(LHG)



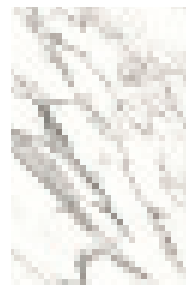
UPLAND STONE
(SLATE TEXTURE)
(LUS)



BLACK WOODGRAIN
(ASHWOOD TEXTURE)
(HBW)



PYRENEES MARBLE
(GLOSS TEXTURE)
(GPM)



CALCUTTA MARBLE
(GLOSS TEXTURE)
(GMC)

www.forbesindustries.com/mystique-bar

1933 East Locust Street Ontario, California 91761

P: 800.832.5427 F: 909.923.1969 E: sales@forbesindustries.com